

AUTOMATED SYSTEMS FOR SLIDING DOORS

A1000

Automated systems for
sliding doors

A1000

Automated system for sliding doors



NEW

Passage opening

700 - 3.000 mm

Max. leaf weight

110 - 2x70 Kg





- FAAC A1000 SERIES automated systems are intended for the automation of exits in compliance with European Standard EN16005; in fact they are able to meet the most strict security standards according to EN 13489-1 PI "c".
- Thanks to its small dimensions the A1000 is suitable for every architectural environment also in case of small places
- Thanks to its multiple use, A1000 is suitable for single leaf sliding doors weighing 110 Kg or double leaves sliding doors weighing 70 + 70 Kg.



EN16005



TECHNICAL SPECIFICATIONS

Model	A1000
Power supply voltage	220-240 V~ - 50/60 Hz
Max. power	140 W
Max. stand-by power without accessories	3 W
Use frequency	100%
Max leaf width	60 mm
Motor	Motor powered at 36V  with encoder
Max. accessories load	1A - 24V 
Type of traction	By means of toothed belt
Opening leaf time	10 ÷ 60 cm/s (1 leaf) - 10 ÷ 140 cm/s (2 leaves)
Closing leaf time	10 ÷ 60 cm/s (1 leaf) - 10 ÷ 140 cm/s (2 leaves)
Partial opening adjustment	5% ÷ 100% of total opening
Pause time	0 - 30 s
Night pause time	0 - 240 s
Encoder	As standard
Protection sensor monitoring (EN16005)	As standard (may be excluded)
Low energy movement (EN16005)	As standard (may be excluded)
Operating ambient temperature	-20°C ÷ +55°C
Protection class	IP 23 (for internal use only)
Compliance with regulations	EN 16005; EN 13489-1 PI "c"; EN 13489-2; EN 60335-1; EN 60335-2; EN ISO 12100; EN 61000-6-2; EN 61000-6-3

FAMILY MODELS

Item code	Model	Leaf	Passage opening mm	Max. leaf weight kg	Self-supporting (head section length) mm
105057PA	A1000	single	700 ÷ 3.000	110	no
	A1000	double	800 ÷ 3.000	70 + 70	no

THE COMPLETE A1000 SPECIAL ENTRANCE INCLUDES THE FOLLOWING COMPONENTS:

E1SL CONTROL UNIT

- Control unit E1SL - the same as is used on the A1000 and A1400 with characteristics that comply with the safety requirements of European standard EN 16005
- 230 V~ switching power supply unit
- Specific, coloured and removable terminal boards
- Programming of basic functions: automatic, night, door open, one-directional, partial, manual
- Automatic adjustments
 - Definition of open and closed positions
 - Selection of optimal speed, acceleration and deceleration
 - Sensor monitoring in compliance with EN 16005
 - Anti-crushing safety device in compliance with EN 16005
 - Possibility of adjusting speed and SET UP execution directly on the board (without the aid of external programmers)
- RESET function
- 2 configurable output contacts
- N. 2 configurable input contacts
- 2 configurable emergency input contacts
- N. 2 programmable monitored safety sensor inputs EN16005
- Interlock function
- 'Gong' function
- 'Courtesy lights' function
- Immediate closing' function
- LCD display to view the door statuses, the fault diagnostics and programming
- 3 buttons for BASIC programming of:
 - number of leaves
 - pause time
 - energy saving
 - night pause
 - opening and closing speed
 - opening and closing thrust force
 - thrust force time
 - interior/exterior detector programming
 - emergency configuration
- 3 buttons for ADVANCED programming of:
 - monitored protection sensor management
 - input configuration
 - pharmacy function
 - motor block
 - motoring on motor lock
 - night function input delay
 - output configuration
- Firmware update and download/upload of some information (configurations, timers, log files) through the USB drive

SUPPORTING PROFILE

- In extruded anodized aluminium, slotted for height and width adjustment
- Dimensions (HxD) 100 x 150 mm
- Sliding track integrated in profile

FRONT COVER

- Available in natural and anodised aluminium, 100 mm high with 'L' shape

- Safety parachute, easy to assemble with head section to prevent cover fall
- Knockouts to adapt leaves of different thickness (max. 60 mm)
- Hinge seat on the supporting profile isolated from the same by anti-vibration supports (open cover by rotating upwards)
- Designed for locking in open position for maintenance

DRIVE UNIT

COMPLETE WITH:

- Gearmotor powered at 36 V with optical encoder
- E1SL Control Unit
- Return pulley with screw adjustment device for belt tensioning
- Electro-conductive transmission belt
- 2 carriages (A1000 1 leaf) or 4 carriages (A1000 2 leaves)
- Power supply unit with switching power supply with low energy consumption (GREENtech)

CARRIAGES

- Die-cast aluminium structure
- Two bearing wheels manufactured in polyamide
- Nylon counterthrust roller on bearing
- Carriage height adjustment ± 7.5 mm
- Lateral adjustments ± 10 mm
- Extruded aluminium leaf connection profile
- Brush for sliding track cleaning

Automated systems for
sliding doors

Automated system
for 1 or 2 leaves

A1000

Item Code: 105057PA

CONTINUOUS SERVICE

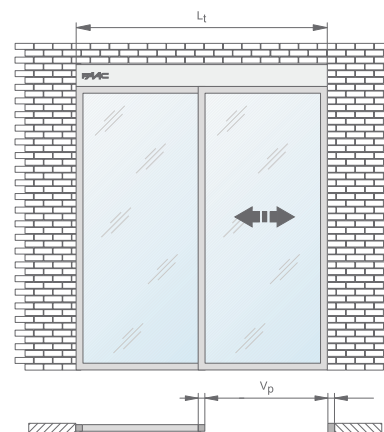
Function keypad not included. Leaf connection profiles included

Head section length $L_t = 2 V_p + 100$ mm

A1000 - 1 LEAF, MAX. WEIGHT 110 KG

dimensions

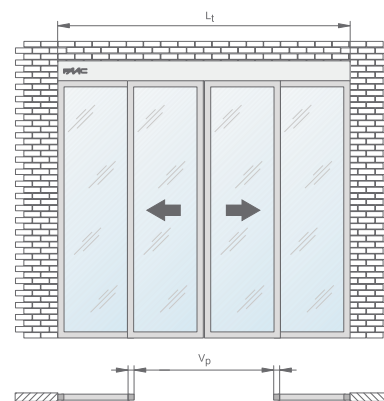
Model	Passage opening mm (Vp)	Head section length mm (Lt)
A1000 PA 1-07	700	1.500
A1000 PA 1-08	800	1.700
A1000 PA 1-09	900	1.900
A1000 PA 1-10	1.000	2.100
A1000 PA 1-11	1.100	2.300
A1000 PA 1-12	1.200	2.500
A1000 PA 1-13	1.300	2.700
A1000 PA 1-14	1.400	2.900
A1000 PA 1-15	1.500	3.100
A1000 PA 1-16	1.600	3.300
A1000 PA 1-17	1.700	3.500
A1000 PA 1-18	1.800	3.700
A1000 PA 1-19	1.900	3.900
A1000 PA 1-20	2.000	4.100
A1000 PA 1-22	2.200	4.500
A1000 PA 1-24	2.400	4.900
A1000 PA 1-25	2.500	5.100
A1000 PA 1-27	2.700	5.500
A1000 PA 1-30	3.000	6.100



A1000 - 2 LEAVES, MAX. WEIGHT 70 + 70 KG

dimensions

Model	Passage opening mm (Vp)	Head section length mm (Lt)
A1000 PA 2-08	800	1.700
A1000 PA 2-09	900	1.900
A1000 PA 2-10	1.000	2.100
A1000 PA 2-11	1.100	2.300
A1000 PA 2-12	1.200	2.500
A1000 PA 2-13	1.300	2.700
A1000 PA 2-14	1.400	2.900
A1000 PA 2-15	1.500	3.100
A1000 PA 2-16	1.600	3.300
A1000 PA 2-17	1.700	3.500
A1000 PA 2-18	1.800	3.700
A1000 PA 2-19	1.900	3.900
A1000 PA 2-20	2.000	4.100
A1000 PA 2-22	2.200	4.500
A1000 PA 2-24	2.400	4.900
A1000 PA 2-25	2.500	5.100
A1000 PA 2-27	2.700	5.500
A1000 PA 2-30	3.000	6.100



HOW TO ORDER AUTOMATED SYSTEMS

1. For filling up the order correctly, use the specific ORDER FORM.
2. For defining the OPENING DIRECTION and STANDARD SIZING, please refer to FORM A.
3. For NON-STANDARD sizing, fill in FORM B. The price applied will refer to the overall head section length (MAX. LC 6100 mm).
4. For intermediate head section length values, the price of the next higher length shall be applied.
5. If the cover is supplied separately from the automated system, a charge of € 20.00 is applied for packaging.

A1000

ACCESSORIES



**XB LOCK Bi-stable
motor lock A1000 w/
knob**

105124

- The block operates directly on the motor and guarantees mechanical locking of the door in any position.
- Operated by internal release knob and set-up for external release installation
- Unlocking allows the door to be opened in the case of emergency
- Management of the motor block integrated into the CONTROL UNIT
- The system operates mechanically on the motor block and sends an opening command to the CONTROL UNIT
- If emergency batteries are installed, the release system controls the motorised door opening even in the event of power failure
- During standard operation, the motor block is only active in NIGHT function.
- For specific requirements, the motor block can also operate in ONE-DIRECTIONAL, AUTOMATIC and PARTIAL mode. Moreover, with the PARTIAL OPENING operating function, the motor block is active both with closed leaves and with open leaves (pharmacy opening)
- There is only one motor block both for single leaf or double leaf applications



**Motor block and leaf
position supervision**

103330

- Magnetic device for controlling that the lock operates correctly and for verifying leaf lock in closing position
- In the case of lock malfunction, an error condition is indicated on the function keypad and the control board
- Set-up for remote switching-on of a warning light or an acoustic signal in the event that the leaves are not in the closing position or in case of motor block faults



**Emergency batteries
E1400RD/E1SL**

103334

- Without power supply, independent operation of the automated system is guaranteed for 30 minutes continuously
- Management of the recharge and control of the charge status of the batteries integrated into the unit
- Automatic battery status test and low battery warning with the possibility of being transmitted to a remote location.
- Set-up for operation:
 - opening only
 - closing only
 - continuous operation (with possibility to select the last operation before running down).

>>

ACCESSORIES FOR FRAMED LEAF



**Natural aluminium
closing profile
(3m bar)**

105272



**Anodised aluminium
closing profile
(3m bar)**

105273



**Lower guide profile
(3m bar)**

390707



**Swivel sliding block
(the lower guide profile
is necessary)**

390794



**Pair of lower sliding
blocks with bracket
(the lower guide profile
is necessary)**

390771

>>



Lower guide profile
brush H=25
(3m bar)

709981



Lower guide profile
brush H=19
(3m bar)

709982

ACCESSORIES FOR SAFETY



Active threshold safety
infrared, microwave,
double technology
sensor XV1

105108



Active threshold safety
infrared, microwave,
double technology
sensor XDT1

105114

FUNCTION KEYPADS/SELECTORS



SDK EVO function
keypad

790019



LK EVO Function
Selector

790024



Key function selector
KS EVO

790942

ACCESSORIES FOR CRYSTAL LEAVES (NOT FOR TELESCOPIC MODELS)



Profile for crystal leaf
connection



Crystal leaf lower
sliding block pair

Description	Finish	Length	Code
Aluminium profile for crystal leaf connection (thickness 10-11 mm)	Natural	1 m	390710
		3 m	390712
	anodised	1 m	390713
		3 m	390715
Pair of lower sliding blocks	-	120 mm each	722189

NOTE

OTHER ACCESSORIES

Function
keypads
page 37

Photocells
page 50

Radar and Sensors
page 46

Pulse generators
page 42

Profiles
page 65

Installation drawings
page 158

KIT SOLUTIONS FOR SLIDING DOOR AUTOMATED SYSTEMS

A1000

List of components necessary for configuring a sliding automated system

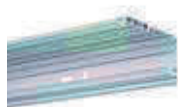
1-LEAF A1000 MODEL	Q.ty	Finish	Description	Item code	Notes
	1	Anodised aluminium	Supporting profile - 4.3 m bar	105426	Depends upon head section width
	1		or 6.1 m bar	105427	
	1		1st leaf basic kit	10505701	
	1		Leaf connection profile	105432	
	see instructions		Toothed belt	105163	per metre
	see instructions		Seal for routing of cables on the supporting profile	105433	per metre

2-LEAVES A1000 MODEL	Q.ty	Finish	Description	Item code	Notes
	1	Anodised aluminium	Supporting profile - 4.3 m bar	105426	Depends upon head section width
	1		or 6.1 m bar	105427	
	1		1st leaf basic kit	10505701	
	1		2nd leaf basic kit	105122	
	1		Leaf connection profile	105432	
	see instructions		Toothed belt	105163	per metre
	see instructions		Seal for routing of cables on the supporting profile	105433	per metre

List of components necessary for configuring the cover

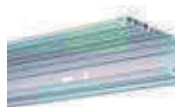
COVER FOR A1000 MODELS	Q.ty	Finish	Description	Item code	Notes
	1	Natural aluminium	Cover profile - 4.3 m bar	105429	Depends upon head section width
	1		or 6.1 m bar	105431	
	1		Accessories securing the cover	105123	
	1		Pair of side panels	105434	
	1	Anodised aluminium	Cover profile - 4.3 m bar	105428	Depends upon head section width
			or 6.1 m bar	105430	
	1		Accessories securing the cover	105123	
	1		Pair of side panels	105434	

COMPONENTS FOR AUTOMATED SYSTEMS



A1000 Supporting Profile
(4.3 m bar)
(4 pcs. pack)

105426



A1000 Supporting Profile
(6.1 m bar)
(4 pcs. pack)

105427



A1000 1st leaf basic kit
(IT-EN-NL)
(4 pcs. pack)

10505701



Seal for routing of cables on the supporting profile
(150 m pack)

105433



Toothed belt
(50 m pack)

105163



Leaf connection profile
(3m bar)
(4 pcs. pack)

105432

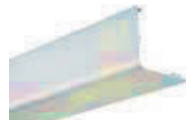
>>

COMPONENTS FOR COVERS



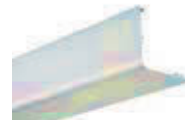
A1000 2nd leaf kit
(4 pcs. pack)

105122



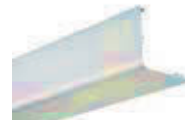
Natural aluminium cover profile
(4.3 m bar)
(4 pcs. pack)

105429



Natural aluminium cover profile
(6.1 m bar)
(4 pcs. pack)

105431

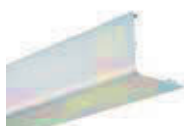


Anodised aluminium cover profile
(4.3 m bar)
(4 pcs. pack)

105428

>>

ACCESSORIES FOR AUTOMATED SYSTEM



Anodised aluminium cover profile
(6.1 m bar)
(4 pcs. pack)

105430



Accessories securing the cover
(4 pcs. pack)

105123



Pair of side panels
(4 pcs. pack)

105434



XB LOCK Bi-stable motor lock A1000 w/ knob
(4 pcs. pack)

105124



Motor block and leaf position supervision
(4 pcs. pack)

105125



Release cable and sheath
(only for external installation)

105326

>>

ACCESSORIES FOR AIR SEALING



Emergency batteries E1400RD/E1SL
(4 pcs. pack)

105504



XFA button photocell
(10 pcs. pack)

105127



Lower guide profile brush H=25
(3m bar) (4 pcs. pack)

105345



Lower guide profile brush H=19
(3m bar) (4 pcs. pack)

105346



Natural aluminium closing profile
(3m bar) (4 pcs. pack)

105319

NOTE

ATTENTION: in this price list, the item code and the relevant price refer to the individual piece.

It is understood that the orders must comply with the quantities indicated in the packs and orders of individual pieces will not be accepted.

◆ This item code includes the instructions in Italian, English and Dutch language

For instructions in French, Spanish and German language order item code 10505702

>>



Anodised aluminium
closing profile
(3m bar) (4 pcs. pack)

105320

ACCESSORIES FOR FRAMED LEAF



Lower guide profile
(3m bar)
(4 pcs. pack)

105380



Swivel sliding block
(the lower guide profile
is necessary)
(8 pcs. pack)

105078



Pair of lower sliding
blocks with bracket
(the lower guide profile
is necessary) (4 pcs)

105487

>>

ACCESSORIES FOR CRYSTAL LEAVES



Lower guide profile
brush H=25
(3m bar) (4 pcs. pack)

105345



Lower guide profile
brush H=19
(3m bar) (4 pcs. pack)

105346



Side profile (8 pcs.)
Clamping profile (4 pcs.
pack) glass 12 mm
3 m bars

105412



Side profile (8 pcs.)
Clamping profile (4 pcs.
pack) glass 10 mm
3 m bars

105402



Rubber seal
(25 m pack)

105403

>>



Fixing plate
(24 pcs. pack)

105404



Terminal side panel
(16 pcs. pack)

105405



Pair of lower sliding
blocks
(length 120 mm each)
glass 10 mm
(10 pcs. pack)

105406



Pair of lower sliding
blocks
(length 120 mm each)
glass 12 mm
(10 pcs. pack)

105413

COMPONENTS FOR PLIERS FOR 2 CRYSTAL LEAVES WITH LENGTH 1.5 M

Q.ty	Description	Item code
2	Side profile	105402
1	Clamping profile	
6 m	Rubber seal	105403
6	Fixing plate	105404
4	Terminal side panel	105405

NOTE

ATTENTION: in this price list, the item code and the relevant price refer to the individual piece.

It is understood that the orders must comply with the quantities indicated in the packs and orders of individual pieces will not be accepted.

FUNCTION KEYPADS/SELECTORS



SDK EVO function keypad (optional)
(starting from 4pcs.)

790019



LK EVO Function Selector
(4 pcs. pack)

790024



Key function selector KS EVO
(starting from 4 pcs)

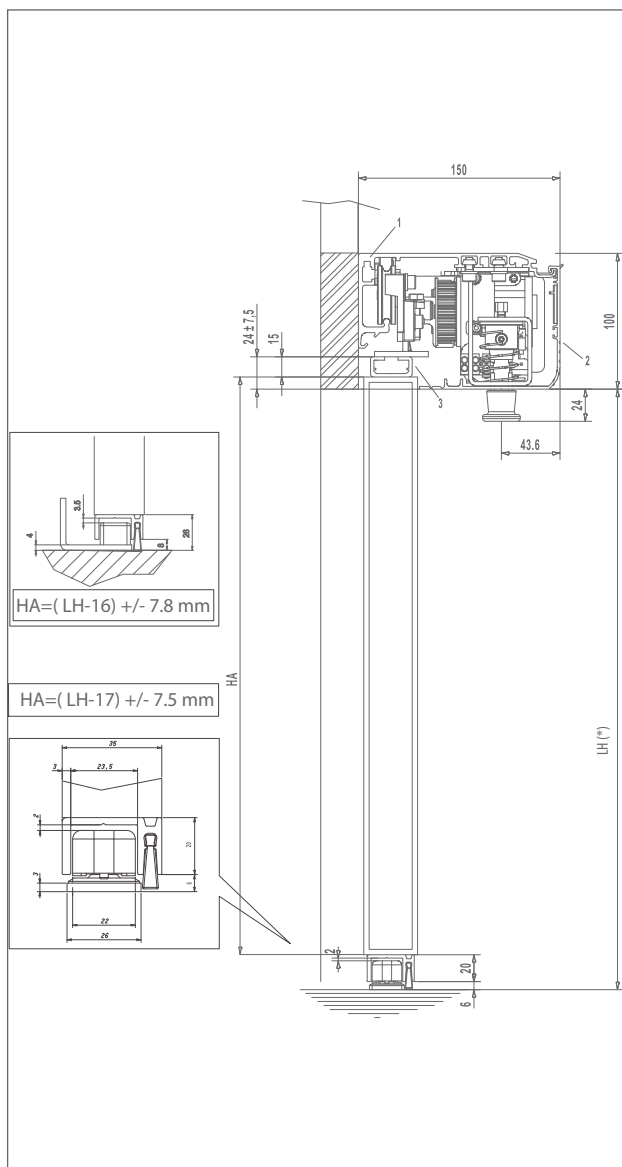
790942

NOTE

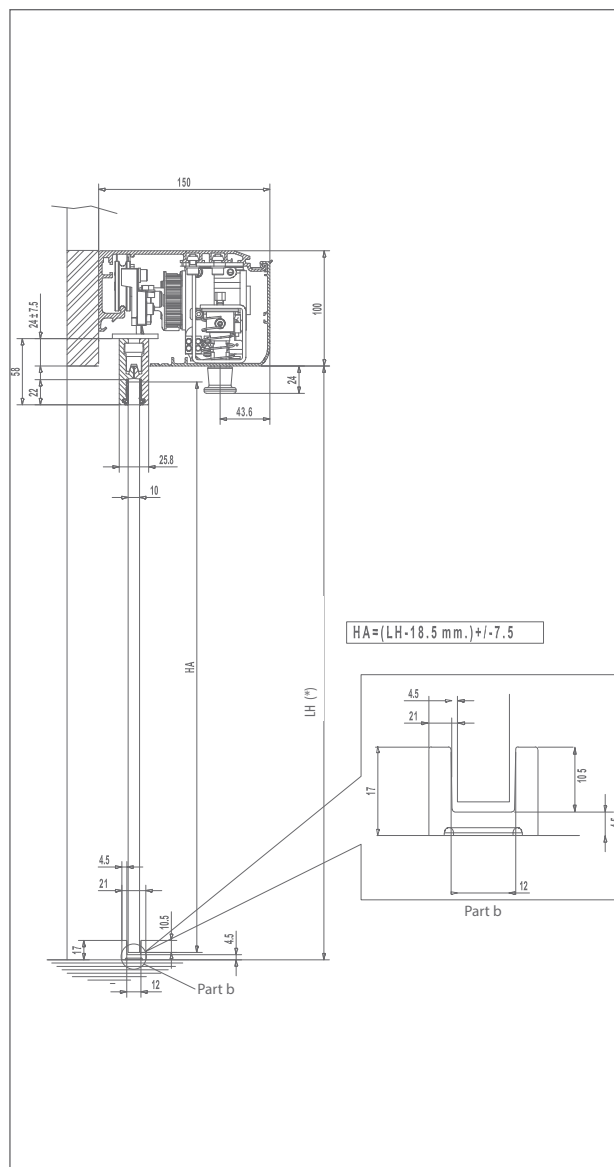
ATTENTION: in this price list, the item code and the relevant price refer to the individual piece.

It is understood that the orders must comply with the quantities indicated in the packs and orders of individual pieces will not be accepted.

A1000



Note: dimensions in mm
(*) recommended max. 2500.



Notes: dimensions in mm
(*) recommended max. 2500.